

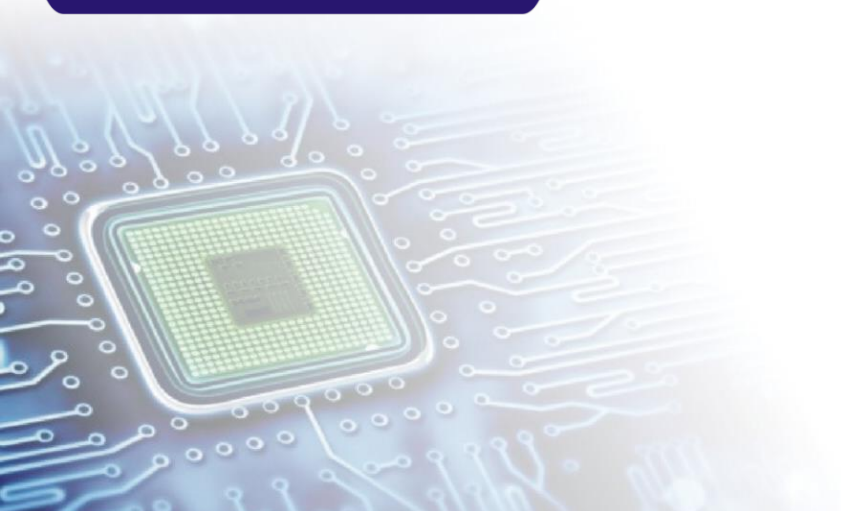


華泰電子股份有限公司

Orient Semiconductor Electronics, Ltd.

(2329)

2018年法人說明會



Summary

Part 1

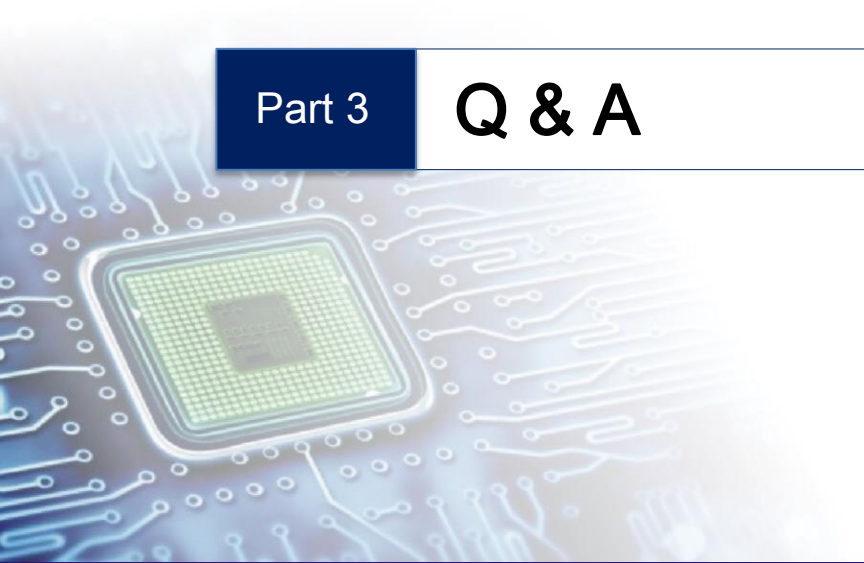
Company Overview

Part 2

Financial Performance

Part 3

Q & A





Company Overview



誠正信實
INTEGRITY

主動創新
INNOVATION

積極用心
PROACTIVENESS

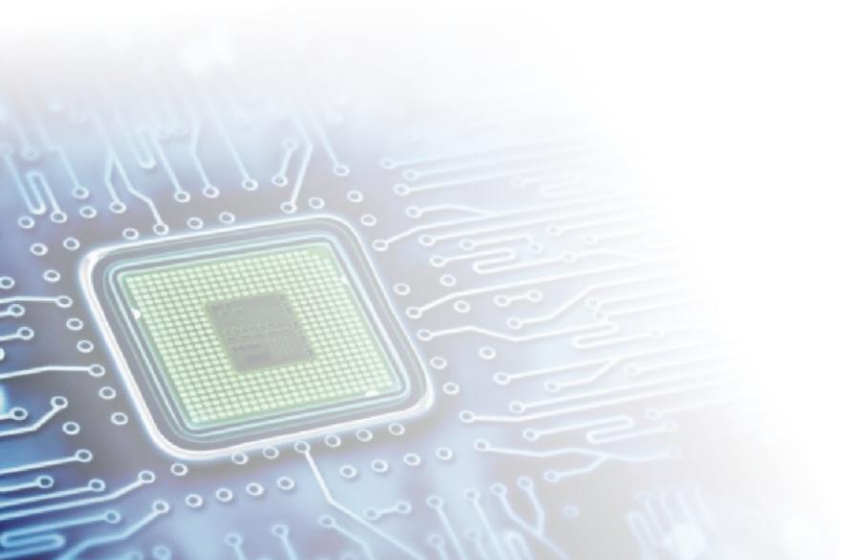
異體同心
EMPATHY

Company Profile

- Established Date : 1971/6
- Issued Capital : NTD 5.523 Billion
- Chairman : Edward Duh
- President : Tony Tung
- Product and Service :
 - ✓ IC Packaging and Testing Services
 - ✓ Electronics Manufacturing Services(EMS/CEM)



Financial Performance



CONSOLIDATED STATEMENTS OF COMPREHENSIVE INCOME (QoQ)

(Thousands of NTD)	Q3/2018	%	Q2/2018	%	Variance	Q1~Q3/2018	%
Net revenue	4,112,318	100.00%	3,730,658	100.00%	10.23%	10,981,666	100.00%
Gross profit	173,201	4.21%	113,940	3.05%	52.01%	168,283	1.53%
Operating (loss) income	(48,976)	(1.19%)	(102,493)	(2.75%)	52.22%	(481,056)	(4.38%)
Income (loss) before tax	(41,837)	(1.02%)	(43,730)	(1.17%)	4.33%	(451,691)	(4.11%)
Income tax gains (expense)	10,465	0.25%	(823)	(0.02%)	1371.57%	279,158	2.54%
Non controlling interests	-	-	-	-	-	-	-
Common stockholders of the parent	(31,372)	(0.76%)	(44,553)	(1.19%)	29.58%	(172,533)	(1.57%)
Basic EPS (in NTD)	(0.06)	-	(0.06)	-	0.00%	(0.31)	-
EBITDA	357,532	8.69%	351,862	9.43%	1.61%	743,049	6.77%

CONSOLIDATED STATEMENTS OF COMPREHENSIVE INCOME_(YoY)

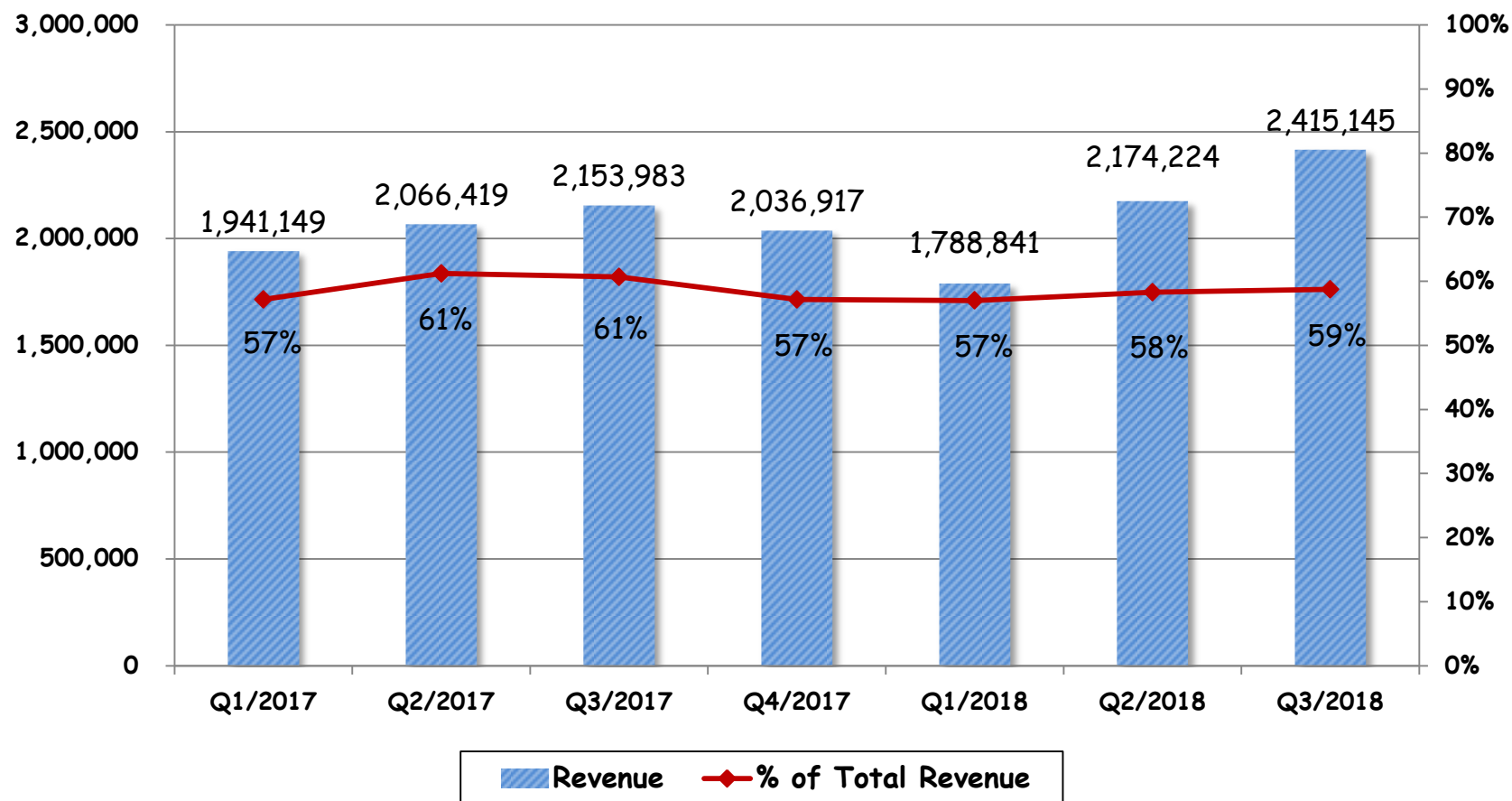
(Thousands of NTD)	Q3/2018	%	Q3/2017	%	Variance
Net revenue	4,112,318	100.00%	3,549,901	100.00%	15.84%
Gross profit	173,201	4.21%	93,469	2.63%	85.30%
Operating (loss) income	(48,976)	(1.19%)	(114,876)	(3.24%)	57.37%
Income (loss) before tax	(41,837)	(1.02%)	(71,623)	(2.02%)	41.59%
Income tax gains (expense)	10,465	0.25%	(22,218)	(0.63%)	147.10%
Non controlling interests	-	-	-	-	-
Common stockholders of the parent	(31,372)	(0.76%)	(93,841)	(2.64%)	66.57%
Basic EPS (in NTD)	(0.06)	-	(0.17)	-	64.71%
EBITDA	357,532	8.69%	339,024	9.55%	5.46%

CONSOLIDATED STATEMENTS OF COMPREHENSIVE INCOME_(Accumulated ,YoY)

(Thousands of NTD)	Q1~Q3/2018	%	Q1~Q3/2017	%	Variance
Net revenue	10,981,666	100.00%	10,322,716	100.00%	6.38%
Gross profit	168,283	1.53%	158,744	1.54%	6.01%
Operating (loss) income	(481,056)	(4.38%)	(504,357)	(4.89%)	4.62%
Income (loss) before tax	(451,691)	(4.11%)	(463,956)	(4.49%)	2.64%
Income tax gains (expense)	279,158	2.54%	50,325	0.49%	454.71%
Non controlling interests	-	-	(1,227)	(0.01%)	100.00%
Common stockholders of the parent	(172,533)	(1.57%)	(413,631)	(4.00%)	58.29%
Basic EPS (in NTD)	(0.31)	-	(0.75)	-	58.67%
EBITDA	743,049	6.77%	812,444	7.87%	(8.54%)

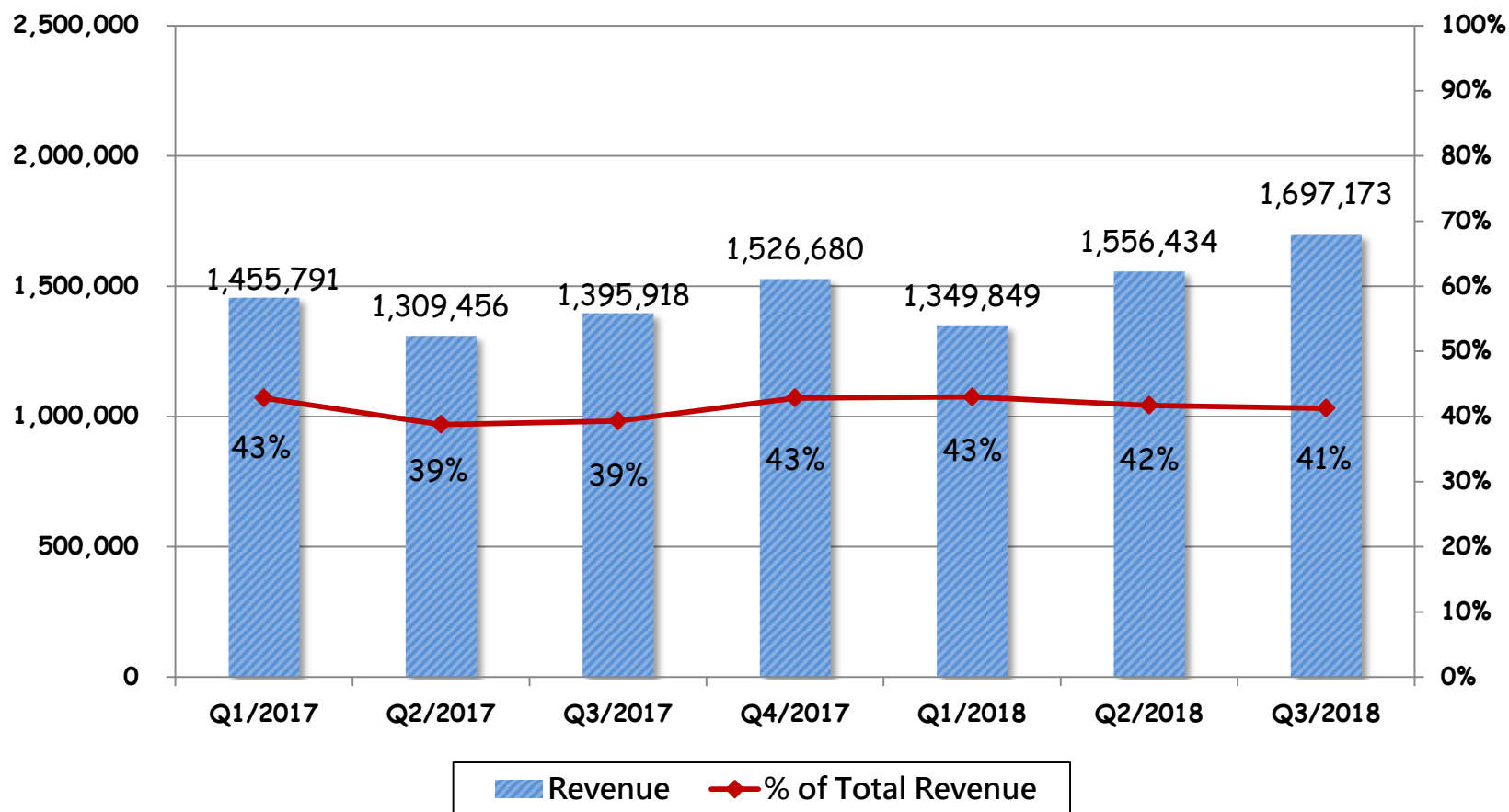
IC Packaging and Testing Services

(Thousands of NTD)



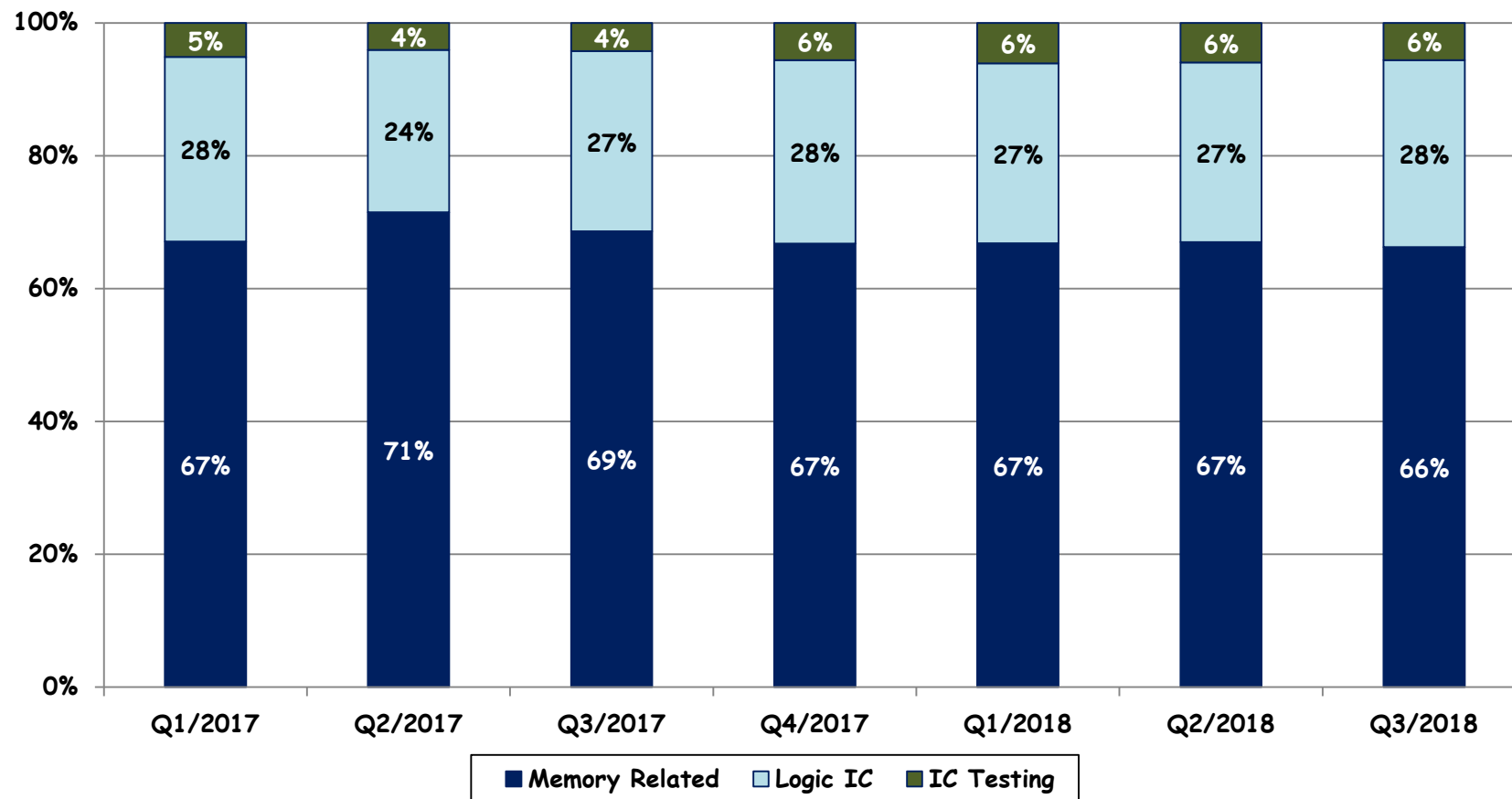
Electronics Manufacturing Services

(Thousands of NTD)



Semiconductor Group

-Percentage of revenue by product application



Key Balance Sheet Items & Index

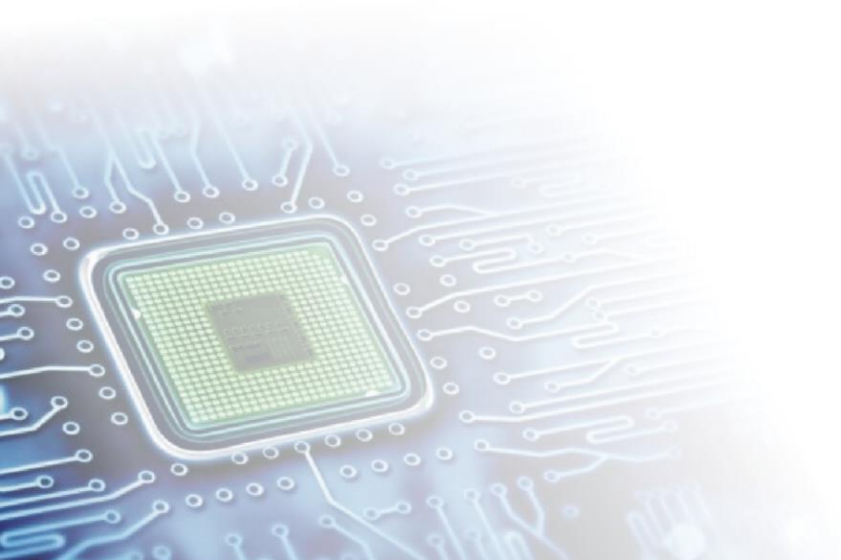
(Thousands of NTD)

	Q3/2018	Q2/2018	Variance
Cash and cash equivalents	929,802	980,380	(5.16%)
Financial assets-Current	362,557	394,454	(8.09%)
Financial assets-Noncurrent & Investments-equity method	687,422	667,938	2.92%
Property, plant, and equipment	7,157,658	7,303,202	(1.99%)
Total assets	16,935,212	16,673,869	1.57%
Short-term loans & Short-term notes payable	3,104,857	3,108,250	(0.11%)
Current portion of long-term loans & Lease payable-Current	1,359,617	1,462,964	(7.06%)
Long-term loans & Lease payable-Non current	1,608,761	1,494,267	7.66%
Total liabilities	11,446,487	11,150,158	2.66%
Total stockholders' equity (including Non-controlling interests)	5,488,725	5,523,711	(0.63%)
Quarterly EBITDA	357,532	351,862	1.61%
Index			
Accounts receivable turnover days	62 Days	63 Days	
Inventory turnover days	37 Days	36 Days	

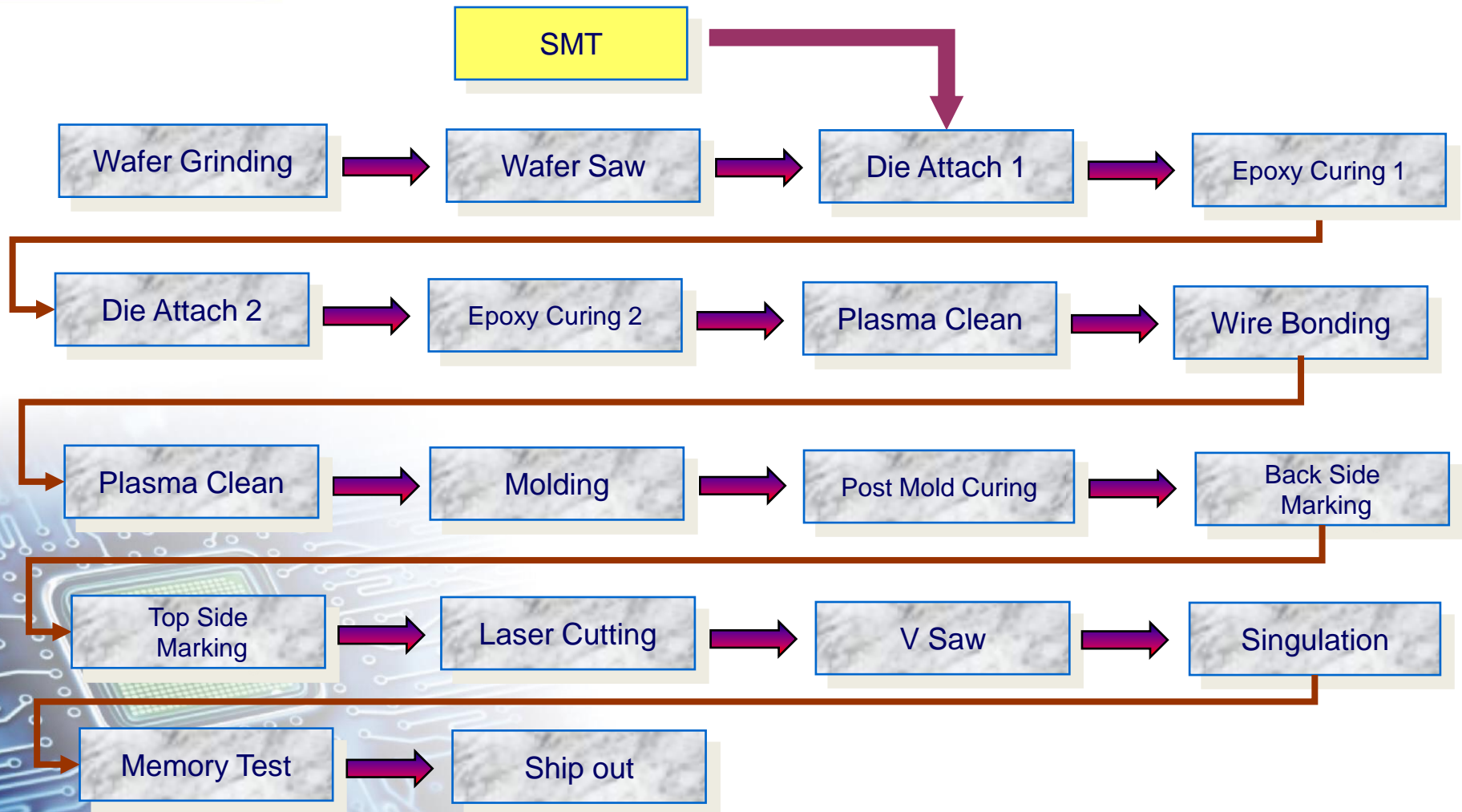
Key Balance Sheet Items & Index

(Thousands of NTD)	Q3/2018	Q3/2017	Variance
Cash and cash equivalents	929,802	1,394,742	(33.34%)
Financial assets-Current	362,557	492,396	(26.37%)
Financial assets-Noncurrent & Investments-equity method	430,479	703,237	(38.79%)
Property, plant, and equipment	7,157,658	7,946,426	(9.93%)
Total assets	16,935,212	17,023,756	(0.52%)
Short-term loans & Short-term notes payable	3,104,857	2,845,254	9.12%
Current portion of long-term loans & Lease payable-Current	1,359,617	1,614,499	(15.79%)
Long-term loans & Lease payable-Non current	1,608,761	2,066,744	(22.16%)
Total liabilities	11,446,487	10,997,377	4.08%
Total stockholders' equity (including Non-controlling interests)	5,488,725	6,026,379	(8.92%)
 Quarterly EBITDA	 357,532	 339,024	 5.46%
 Index			
Accounts receivable turnover days	62Days	61Days	
Inventory turnover days	37Days	36Days	

Q & A



Micro SD Process Flow



Disclaimer

The presentation and the relevant information mentioned in this material have been compiled from both internal and external resources.

These forward looking statements involve known and unknown risks, uncertainties and other factors, including price variation, competition, global economy, exchange rate movement and market demand, which may cause actual results to differ materially from those implied by such forward-looking statements.

The forward looking statements expressed in this material reflect the Company's current view about the future as of today. The Company is not responsible for any updates if there are any changes in the future.