



華泰電子股份有限公司

Orient Semiconductor Electronics ,Ltd.

(股票代號 : 2329)

2023年法人說明會

INVESTOR CONFERENCE

18 AUG ,2023

Summary

Part 1 Company Profile

Part 2 Manufacture Service & Product

Part 3 2023 Q2 Financial Performance

Part 4 Competitive Advantage

Part 5 Q&A

Company Profile



Company History



>> 資本額 Capital : US\$ 232M(NTD7.35B)
 Common Stock : US\$ 175M
 Preferred C Stock : US\$ 57M

- 2021
 50th Anniversary Celebration
- 2015 & 2020
 Strategic Partnership Announcement
- 2014
 1st 16D microSD in the world
- 2005
 Biz Transformation into Memory Market
- 2000
 HQ Building Officially Opened
- Apr, 1994
 IPO in Taiwan Stock Exchange (TSE: 2329)
- 1971 Established
 Founder : Dr. Eugene C. Y. Duh
 Headquarters : Kaohsiung, Taiwan

Factory



Headquarters (Flash Memory)
(750,000 sq. ft.)

- » 6 Production buildings in NTIP
- » Headcount : around 4,900



Facility 2
(59,223 sq. ft.)



LIC
(256,200 sq. ft.)



Facility 3
(158,638 sq. ft.)

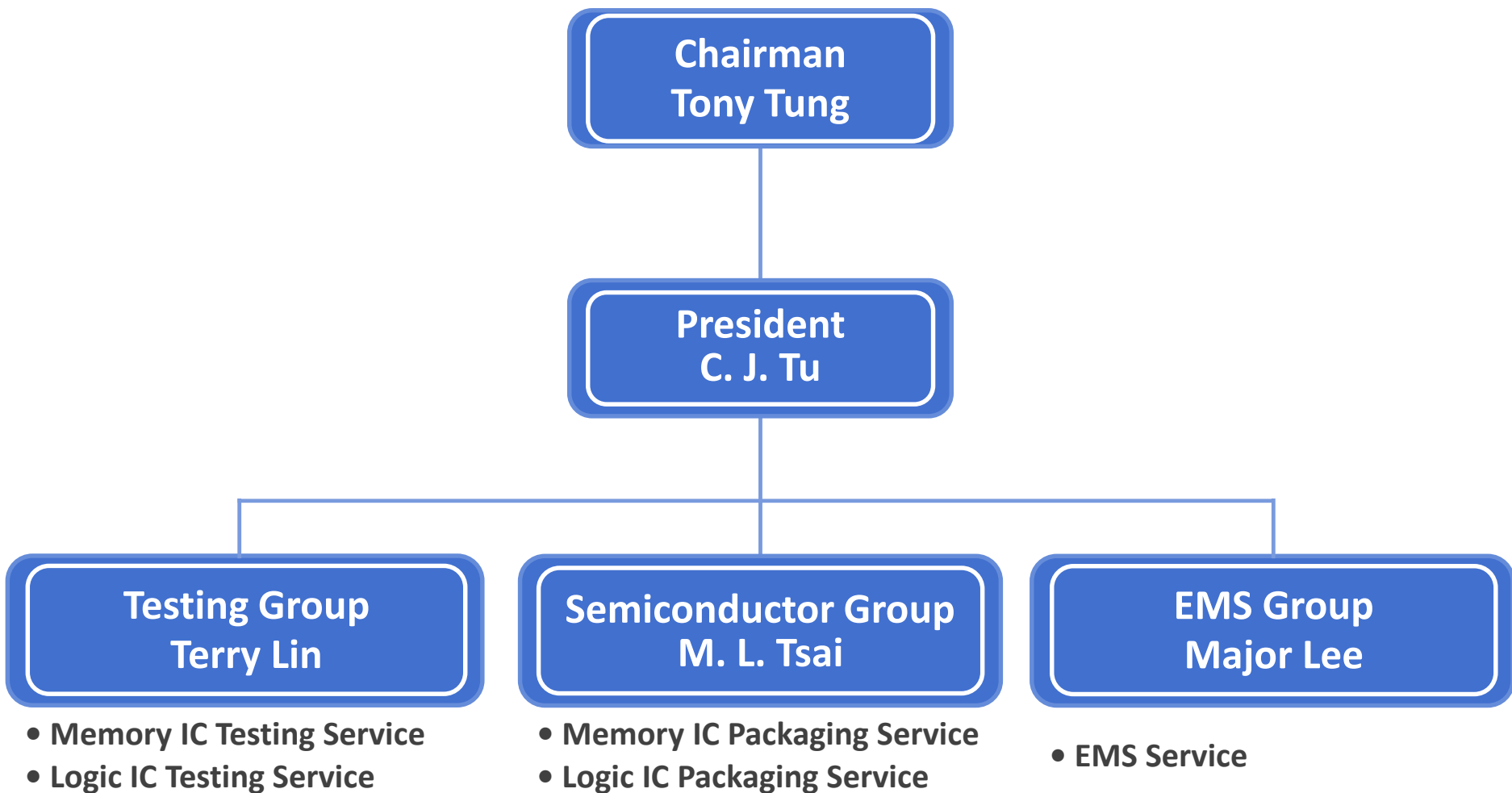


Facility 1
(146,475 sq. ft.)

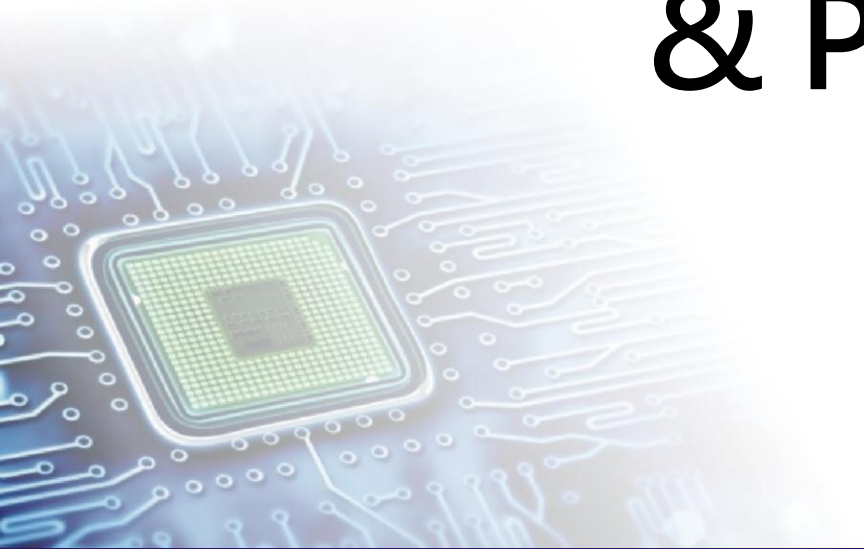


Facility 5
(190,000 sq. ft.)

Organization

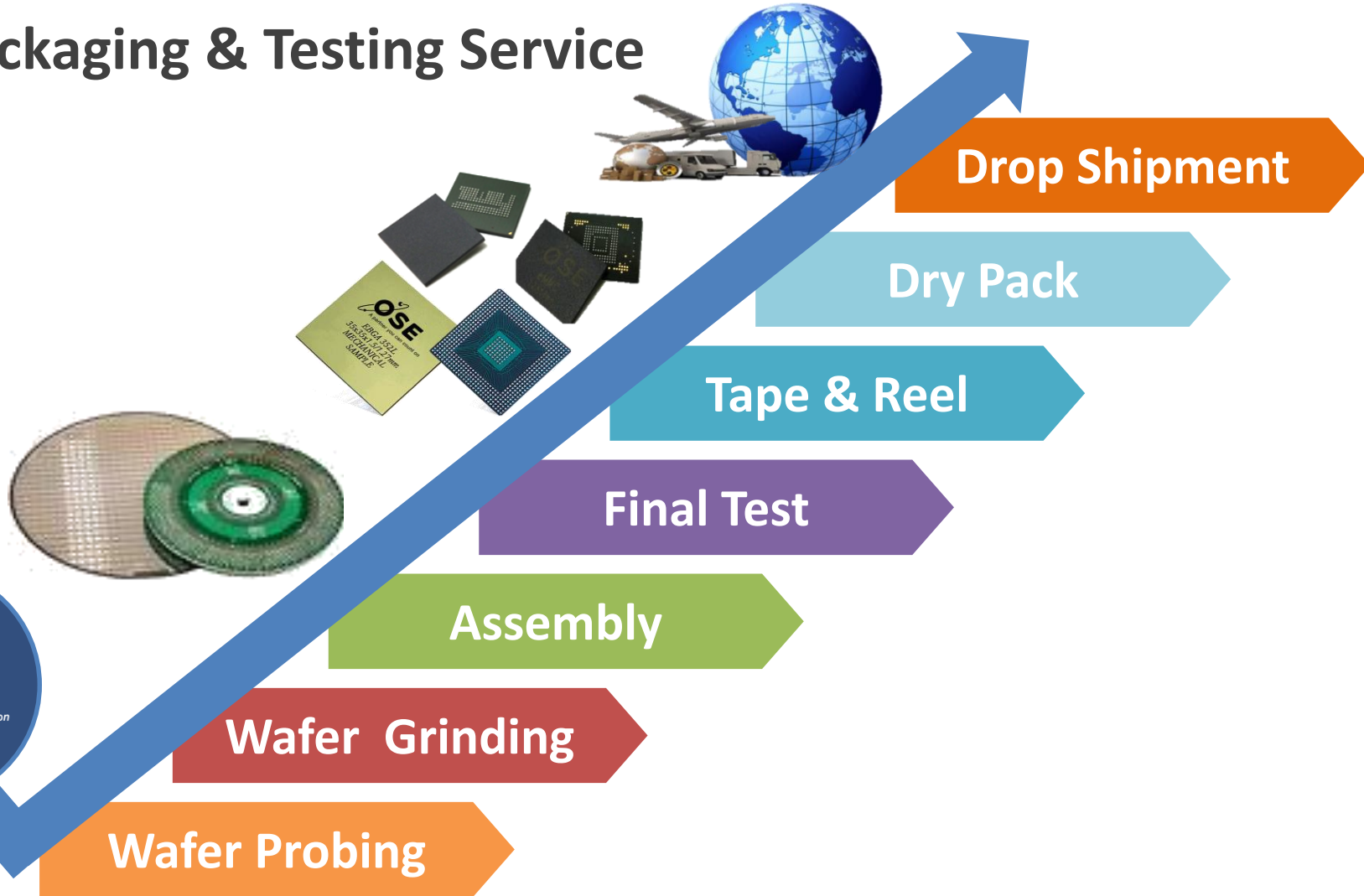


Manufacture Service & Product



Total Solution

>> IC Packaging & Testing Service

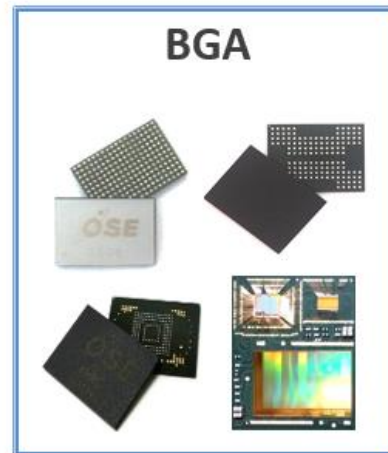
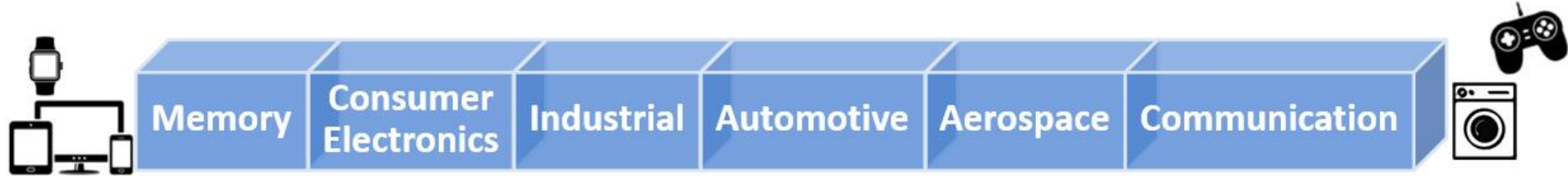


Total Solution

Electronics Manufacturing Service



Product Application



*Includes Wire Bond Type, Flip Chip Type, SiP, etc

2023 Q2

Financial Performance



CONSOLIDATED STATEMENTS OF COMPREHENSIVE INCOME (QoQ)

(Thousands of NTD)	Q2/2023	%	Q1/2023	%	Variance
Net revenue	3,998,666	100.00%	3,253,411	100.00%	22.91%
Gross profit	740,953	18.53%	321,407	9.88%	130.53%
Operating income	418,704	10.47%	101,004	3.10%	314.54%
Income before tax	571,862	14.30%	97,749	3.00%	485.03%
Income tax(expense)	(57,504)	(1.44%)	81,972	2.52%	(170.15%)
Non controlling interests	-	-	-	-	-
Net Income	514,358	12.86%	179,721	5.52%	186.20%
Basic EPS (in NTD)	0.72	-	0.25	-	188.00%
EBITDA	843,644	21.10%	375,060	11.53%	124.94%

CONSOLIDATED STATEMENTS OF COMPREHENSIVE INCOME (YoY)

(Thousands of NTD)	Q2/2023	%	Q2/2022	%	Variance
Net revenue	3,998,666	100.00%	4,288,219	100.00%	(6.75%)
Gross profit	740,953	18.53%	752,628	17.55%	(1.55%)
Operating income (loss)	418,704	10.47%	449,047	10.47%	(6.76%)
Income (loss) before tax	571,862	14.30%	510,725	11.91%	11.97%
Income tax (expense) gains	(57,504)	(1.44%)	(90,341)	(2.11%)	(36.35%)
Non controlling interests	-	-	-	-	-
Net Income	514,358	12.86%	420,384	9.80%	22.35%
Basic EPS (in NTD)	0.72	-	0.61	-	18.03%
EBITDA	843,644	21.10%	811,488	18.92%	3.96%

CONSOLIDATED STATEMENTS OF COMPREHENSIVE INCOME (Accumulated ,YoY)

(Thousands of NTD)	Q1~Q2/2023	%	Q1~Q2/2022	%	Variance
Net revenue	7,252,077	100.00%	8,127,119	100.00%	(10.77%)
Gross profit	1,062,360	14.65%	1,404,312	17.28%	(24.35%)
Operating income (loss)	519,708	7.17%	815,531	10.03%	(36.27%)
Income (loss) before tax	669,611	9.23%	976,700	12.02%	(31.44%)
Income tax (expense) gains	24,468	0.34%	(188,953)	(2.32%)	(112.95%)
Non controlling interests	-	-	-	-	-
Net Income	604,079	8.33%	787,747	9.69%	(23.32%)
Basic EPS (in NTD)	0.98	-	1.13	-	(13.27%)
EBITDA	1,128,704	15.56%	1,582,486	19.47%	(28.68%)

Key Items & Index of Balance Sheet

(Thousands of NTD)	Q2/2023	Q1/2023	Variance
Cash and cash equivalents	3,820,624	3,292,177	16.05%
Financial assets measured at amortized cost	-	243,520	(100.00%)
Financial assets-Noncurrent & Investments-equity method	1,453,450	1,313,702	10.64%
Property, plant, and equipment	5,184,714	5,128,296	1.10%
Total assets	17,817,892	16,191,118	10.05%
Short-term loans & Short-term notes payable	-	-	-
Long-Term Liabilities-Current Portion	11,618	2,904	300.07%
Long-term loans	1,137,344	1,146,058	(0.76%)
Total liabilities	7,897,825	6,043,678	30.68%
Total stockholders' equity	9,920,067	10,147,440	(2.24%)
Quarterly EBITDA	843,644	375,060	124.94%
Index			
Debt ratio	44.33%	37.33%	
Accounts receivable turnover days(Q2)	76Days	83Days	
Inventory turnover days(Q2)	45Days	52Days	

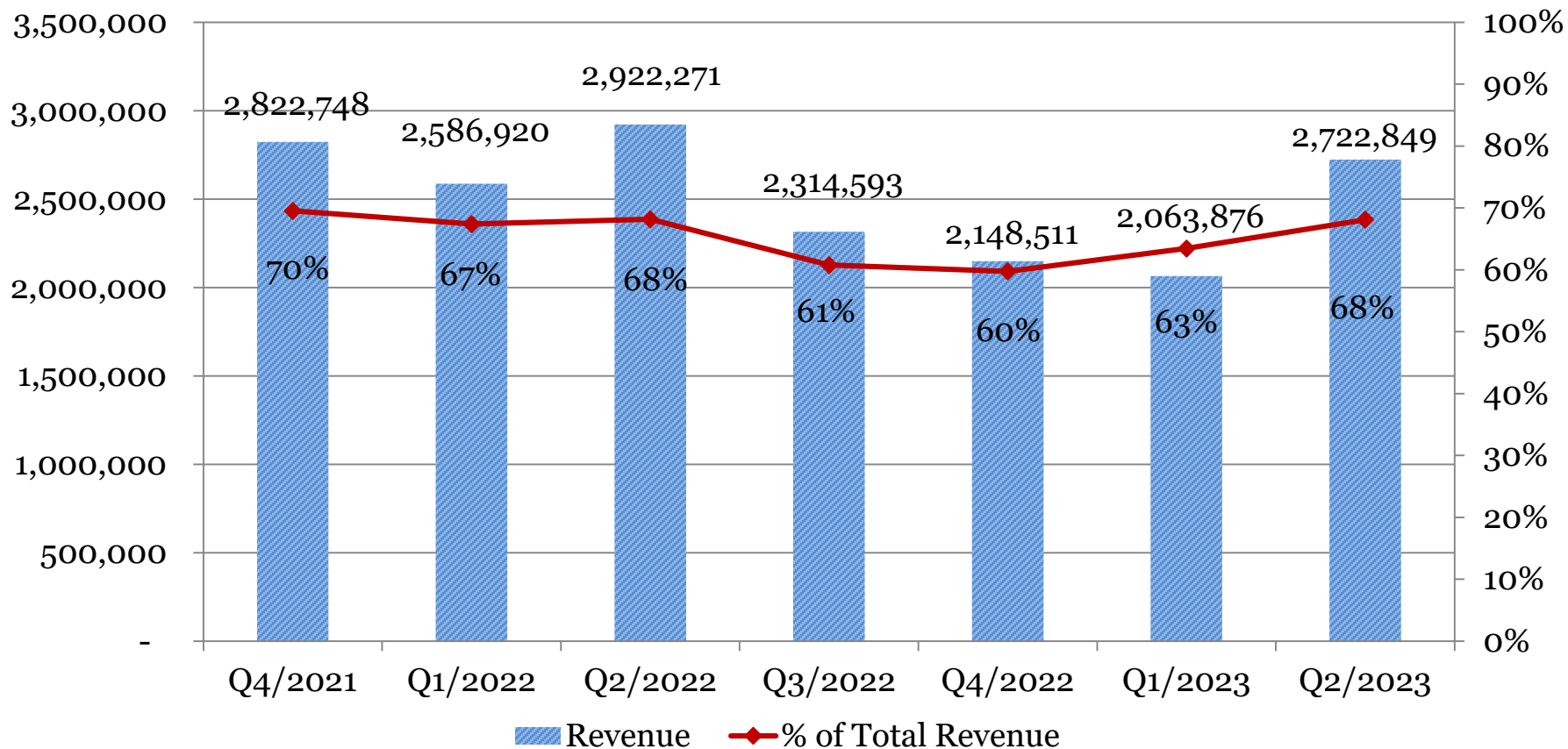
Key Items & Index of Balance Sheet

(Thousands of NTD)

	Q2/2023	Q2/2022	Variance
Cash and cash equivalents	3,820,624	3,466,255	10.22%
Financial assets measured at amortized cost	-	-	-
Financial assets-Noncurrent & Investments-equity method	1,453,450	545,462	166.46%
Property, plant, and equipment	5,184,714	5,314,239	(2.44%)
Total assets	17,817,892	17,475,890	1.96%
Short-term loans & Short-term notes payable	-	467,622	(100.00%)
Long-Term Liabilities-Current Portion	11,618	15,000	(22.55%)
Long-term loans	1,137,344	635,962	78.84%
Total liabilities	7,897,825	8,492,915	(7.01%)
Total stockholders' equity	9,920,067	8,982,975	10.43%
 Quarterly EBITDA	 843,644	 811,488	 3.96%
 Index			
Debt ratio	44.33%	48.60%	
Accounts receivable turnover days(Q1~Q2)	85Days	78Days	
Inventory turnover days(Q1~Q2)	52Days	51Days	

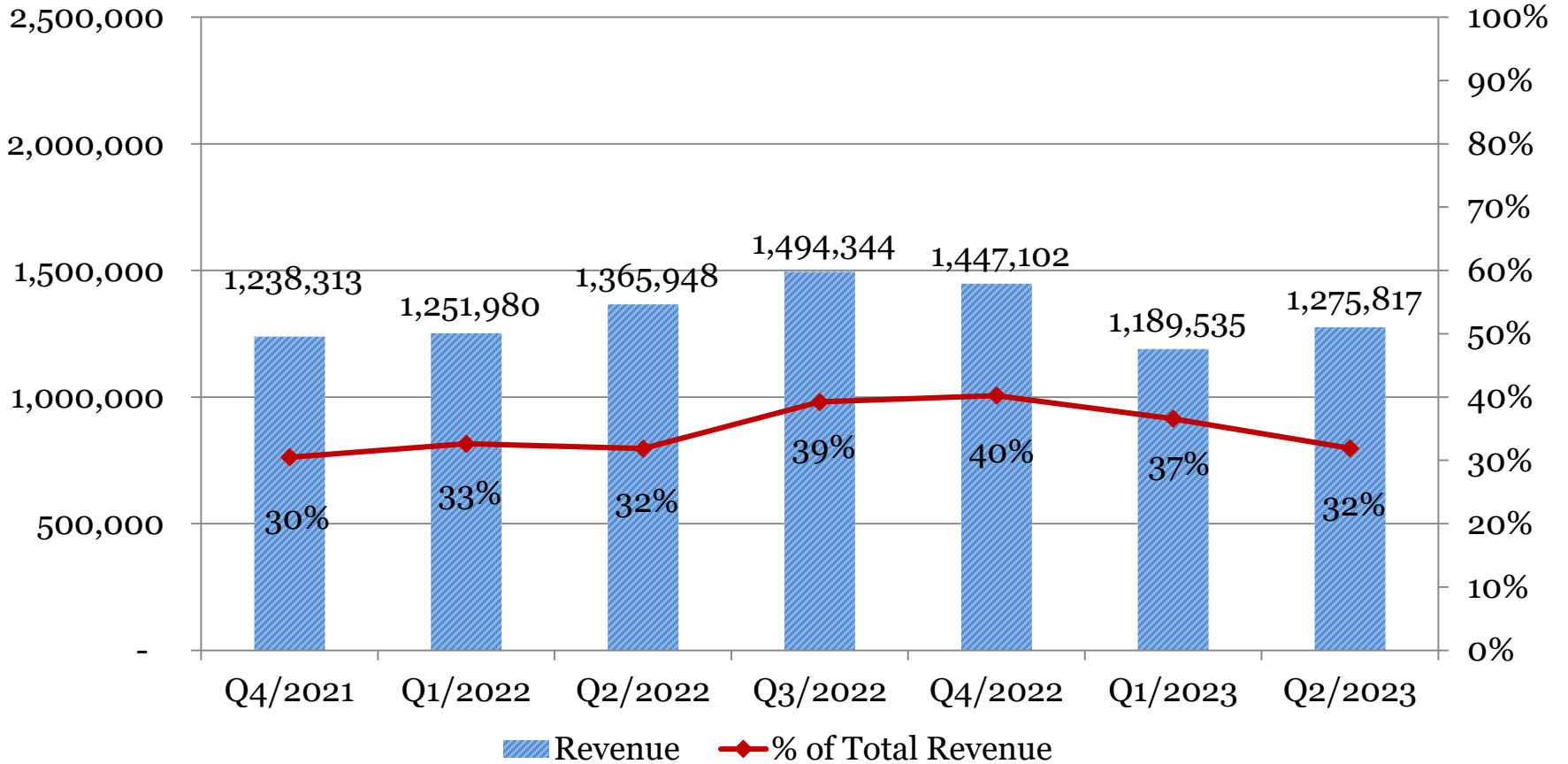
IC Packaging and Testing Services

(Thousands of NTD)



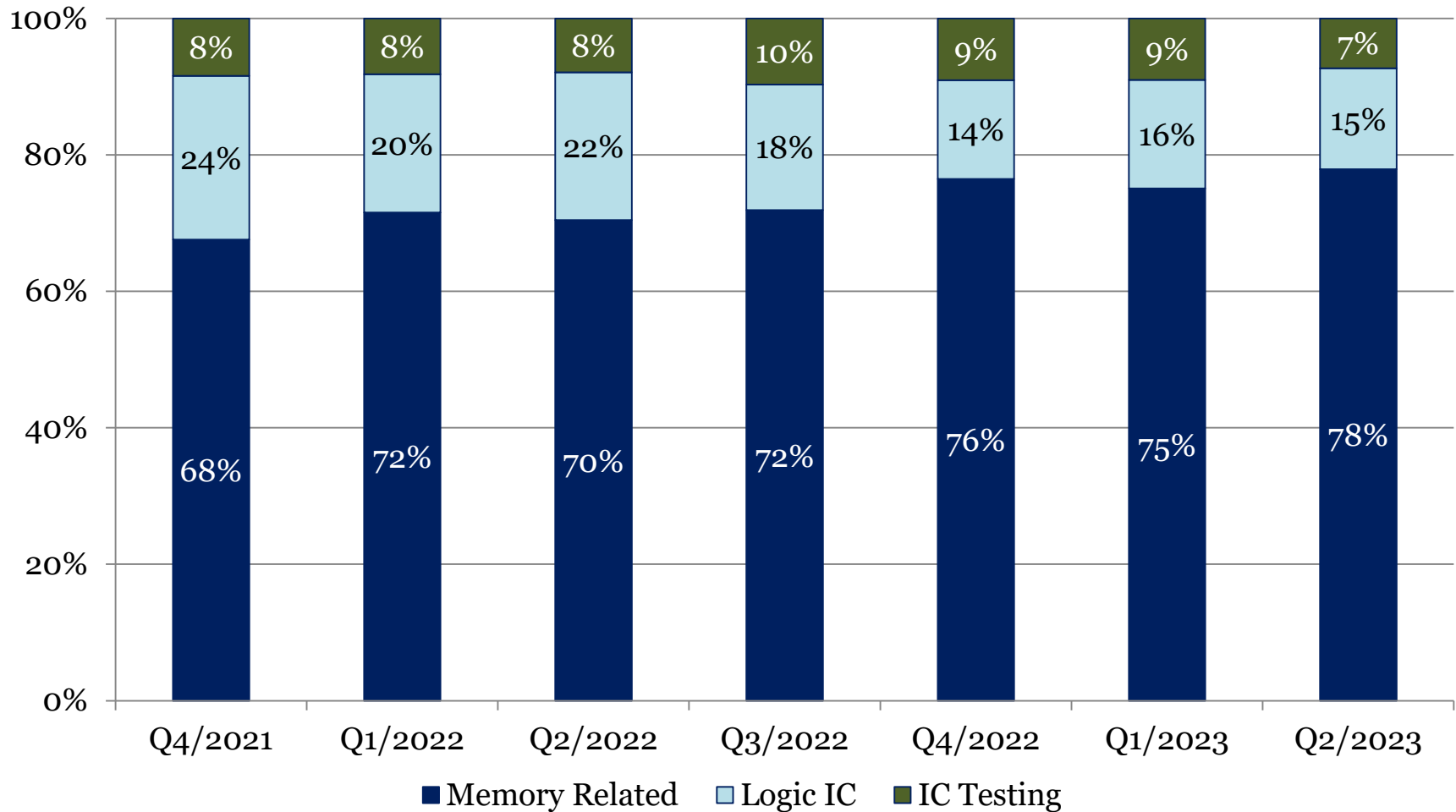
Electronics Manufacturing Services

(Thousands of NTD)

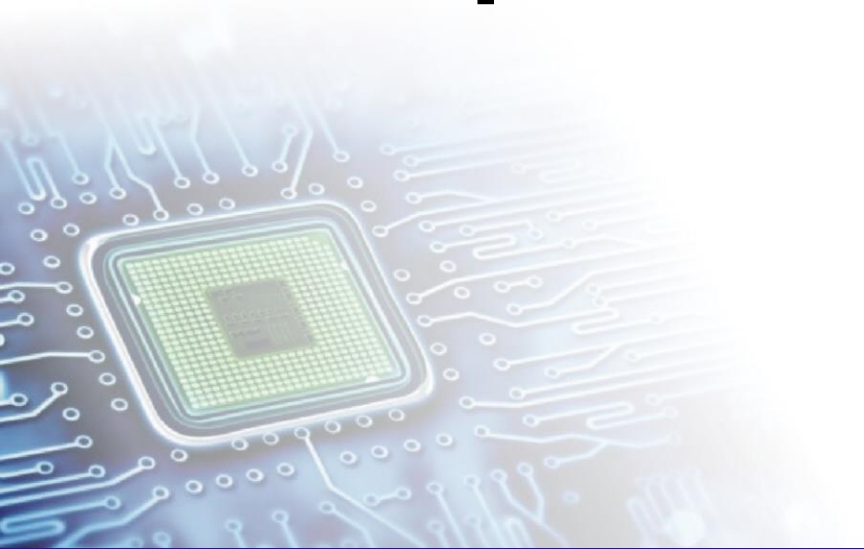


Semiconductor Group

-Percentage of revenue by product application



Competitive Advantage



**“TO PROVIDE
STEADY
PERFORMANCE
WITH
HIGH YIELD”**



- **Focus on Memory Market for 20 years.**
- **Efficient Manufacture Platform for Memory.**



- **Advanced Process Capability**
 - 25um wafer thickness
 - 16 Layers Die Stacking for microSD/BGA/SD
 - 1ST 1TB microSD announced to market

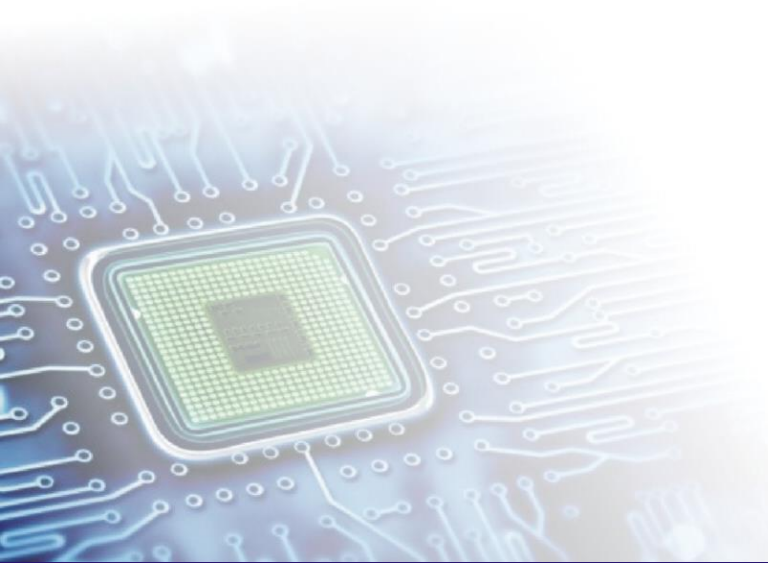


- **Highly Systematized Production Environment**
- **MES Automation System**



- **One-Stop Service**
- **High Degree of Flexibility on capacity allocation**

Q&A



Disclaimer

The presentation and the relevant information mentioned in this material have been compiled from both internal and external resources.

These forward looking statements involve known and unknown risks, uncertainties and other factors, including price variation, competition, global economy, exchange rate movement and market demand, which may cause actual results to differ materially from those implied by such forward-looking statements.

The forward looking statements expressed in this material reflect the Company's current view about the future as of today. The Company is not responsible for any updates if there are any changes in the future.